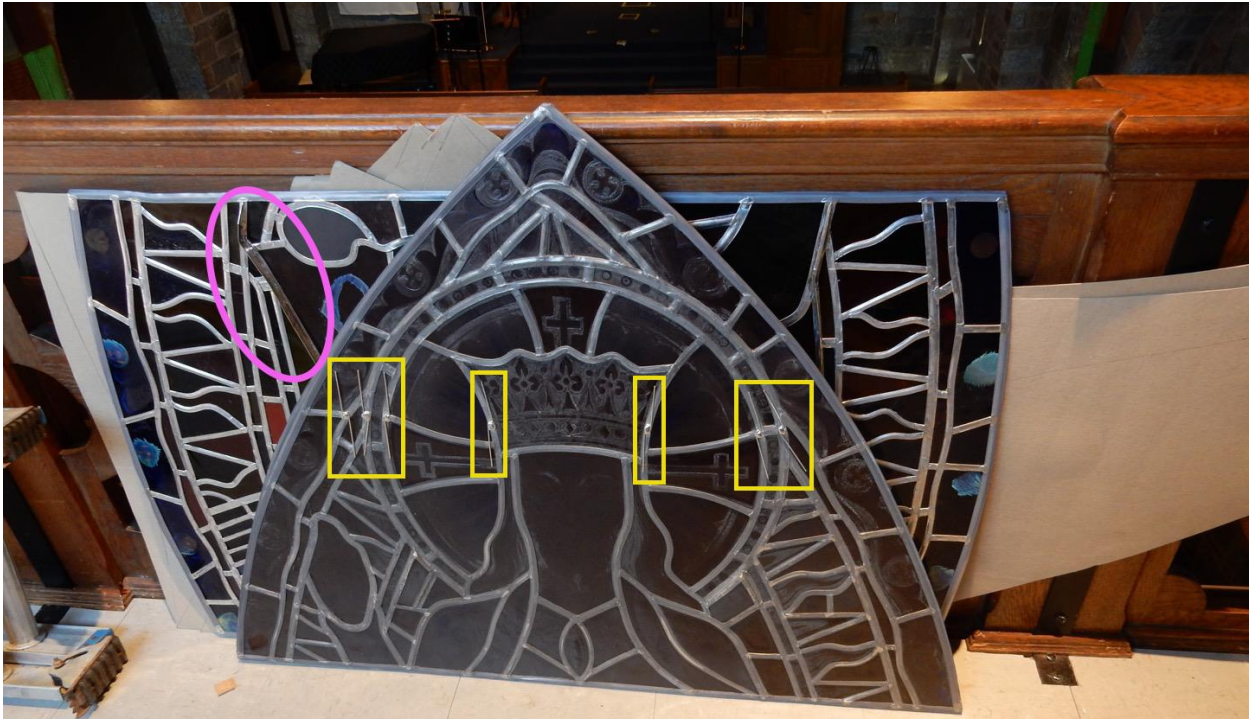


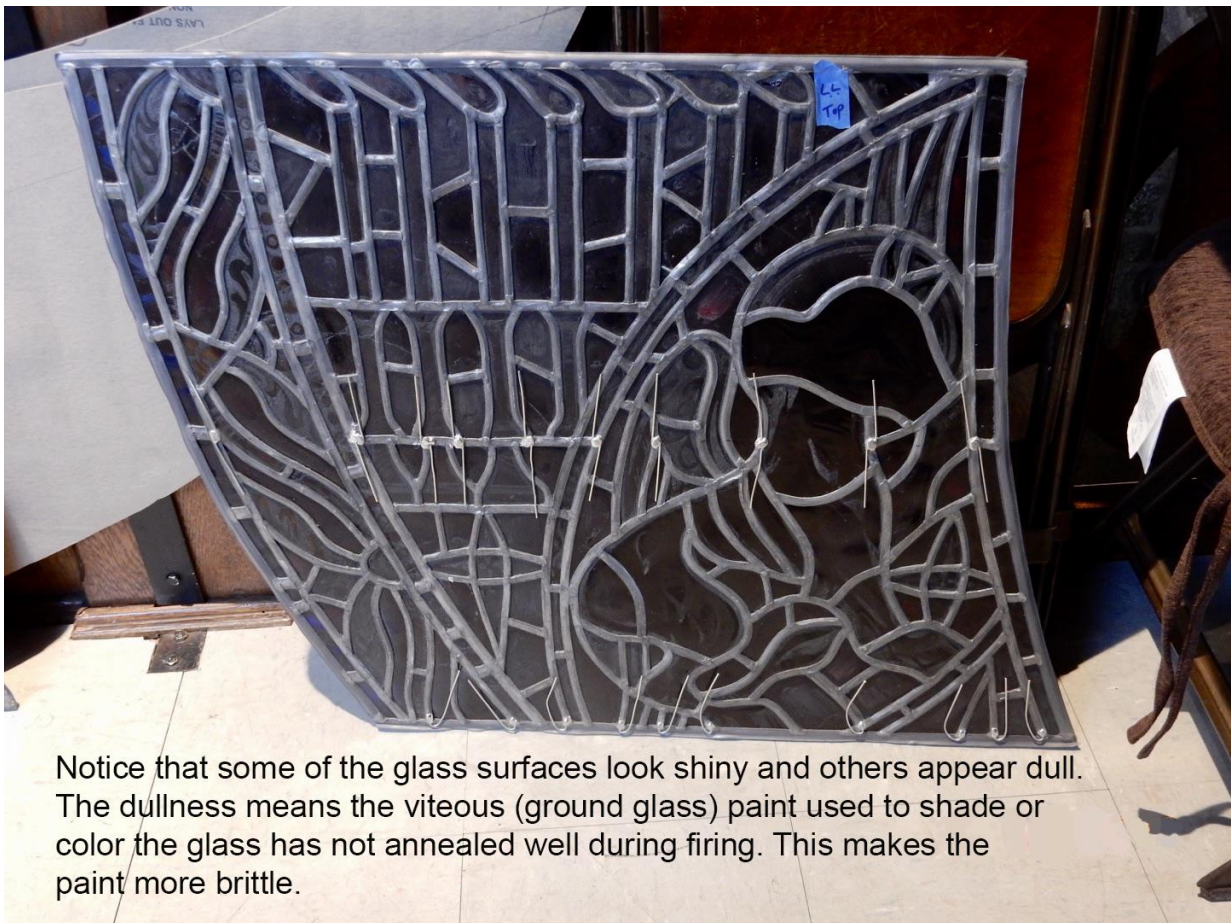
UPDATE ON RESTORATION OF THE CHRIST THE KING WINDOW



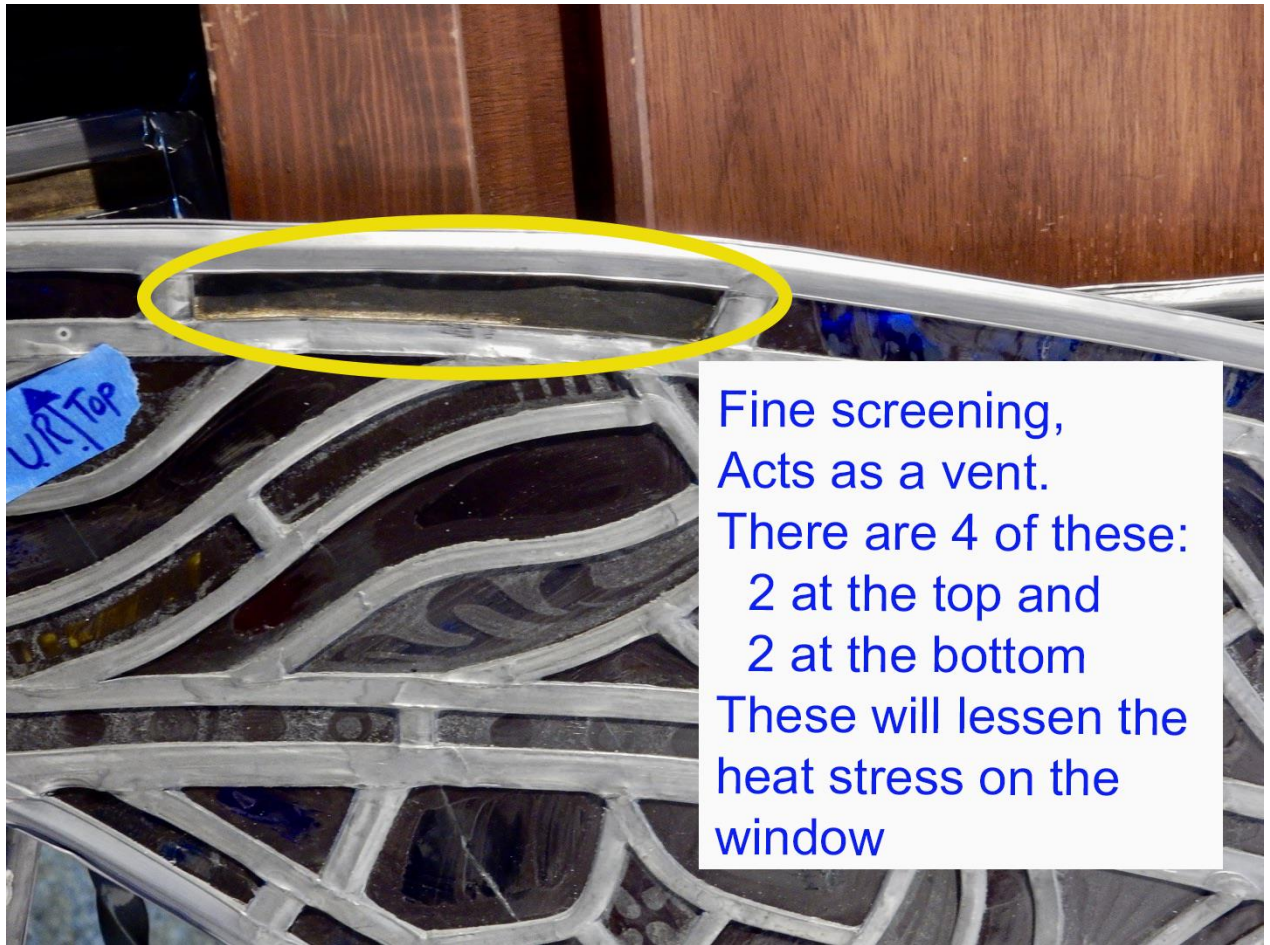
Andrew is showing us the outside surface of the panel. The lead strips (comes) on the outside are reinforced by tin, which is shiny. The tin makes the window more rigid and less likely to buckle. Also, you get a sense of the size of the panel.



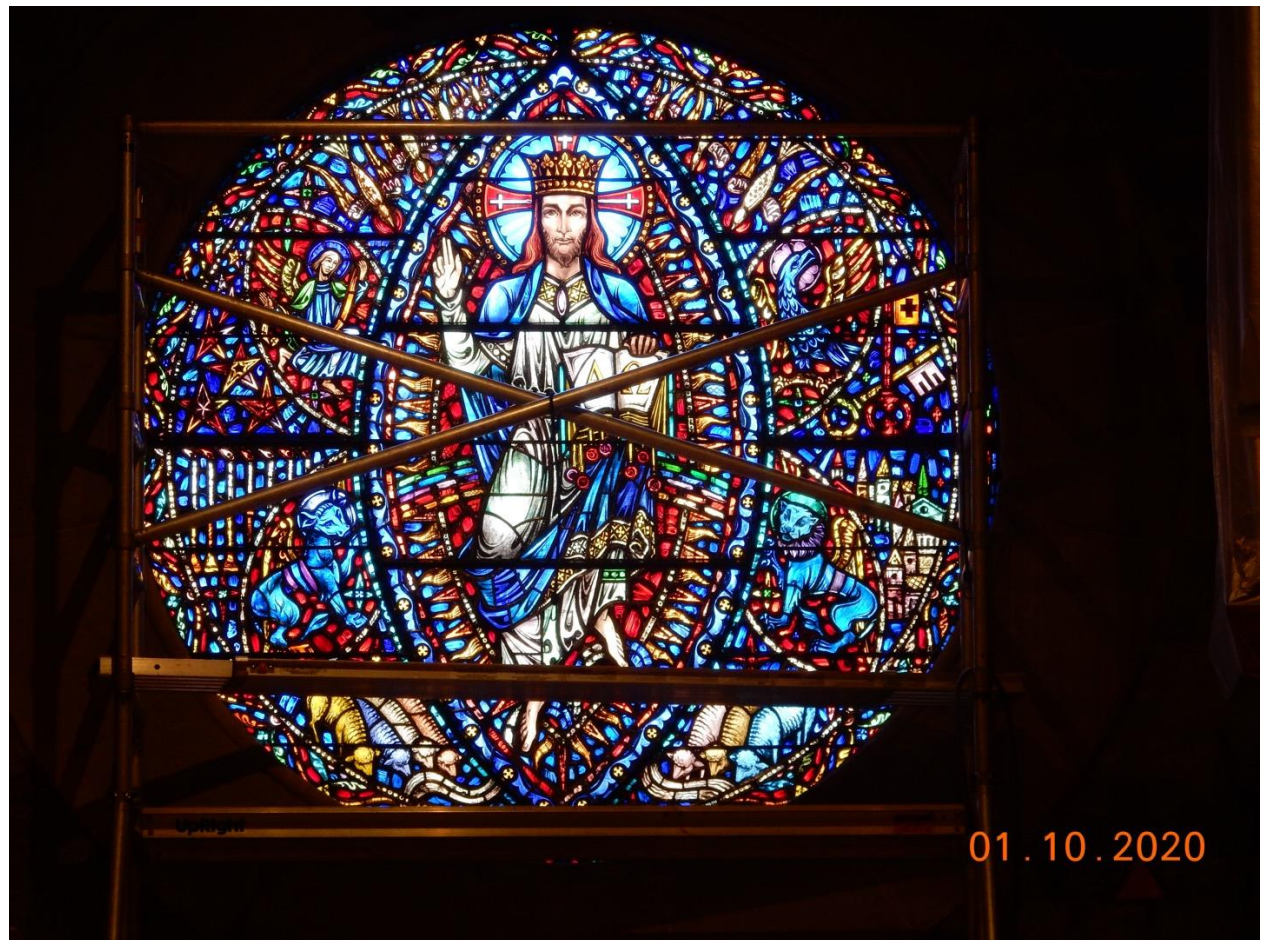
Panels waiting to be installed. The panel of Christ's head and shoulders is facing with the interior surface showing. The yellow rectangles highlight tie wires that will attach to window support rods. In back, on the outward facing side, shiny tin comes are visible on a different panel. The pink ellipse shows one of the new support braces that follow some of the comes on the exterior side of the panels.



Notice that some of the glass surfaces look shiny and others appear dull. The dullness means the vitreous (ground glass) paint used to shade or color the glass has not annealed well during firing. This makes the paint more brittle.



Fine screening,
Acts as a vent.
There are 4 of these:
2 at the top and
2 at the bottom
These will lessen the
heat stress on the
window



Before

After



01.10



17.10.2020

